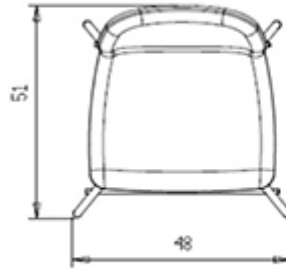
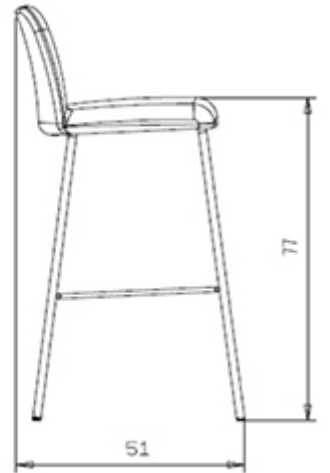
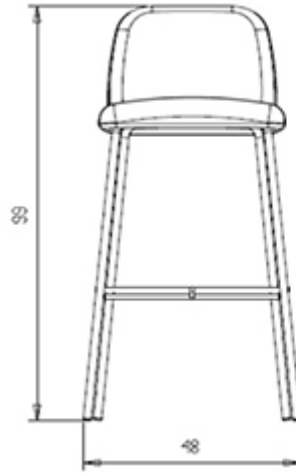



Myra 654

MYRA COLLECTION:

Myra 652, Myra 654, Myra 653, Myra 654B, Myra 655, Myra 656, Myra 657, Myra 658, Myra 658B, Myra 659, Myra 660, Myra 667, Myra 668, Myra 669, Myra 674, Myra 675, Myra 677, Myra 676, Myra 678, Myra 679, Myra 680, Myra 681, Myra 682, Myra 683,



4-leg stool with steel frame and upholstered shell in fabric; version with seat H 77 cm. Available in polyurethane injected foam in compliance with UK fire regulations. 

WEIGHT

7,7 Kg

PACK

0,28 m³

PIECES PER BOX

1

FINISHES SEATING

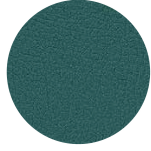
TE FABRICS



Melva
+ 5 colors



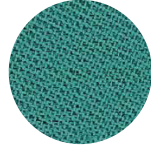
Fortis + 8 colori



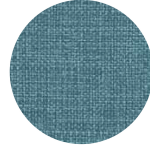
Inca
+ 14 colors



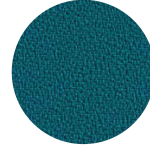
Amsterdam
+ 8 colors



Chili Gabriel
+ 8 colors



Medley Gabriel
+ 15 colors



Mirage
+ 8 colors



Convert
+ 7 colors



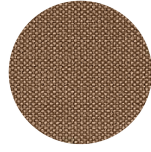
Fenice
+ 8 colors



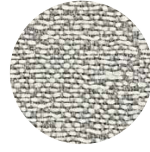
Mood Gabriel
+ 8 colors



Valencia
+ 14 colors



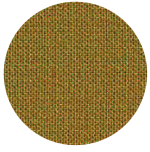
Reviva Hero
+ 10 colors



Fabthirty Rubelli
+ 8 colors



Ocean Mastrotto
+ 15 colors



Remix 3 Kvadrat
+ 15 colors

NOTE

Resources

[3ds](#)



| [dwg](#)



Stichings available in red, rope and according to fabric colour.



FRAMES

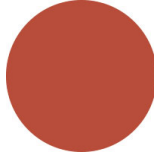
AC STEEL



NCS S4000-N VR White aluminium
☀



NCS S9000-N VR Jet black
☀



NCS S3060-Y80R Coral red
☀



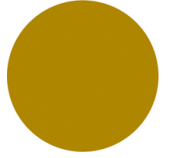
NCS S9000-N VR Matt Jet Black
☀



VR Rough metallic bronze
☀



CR Chrome



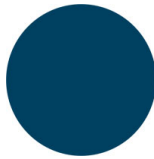
NCS S3060-Y Curry
☀



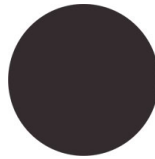
NCS S7020-G50Y Olive green
☀



NCS S4050-B40G Water blue
☀



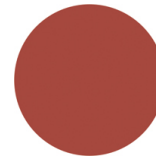
NCS S6030-B Capri blue
☀



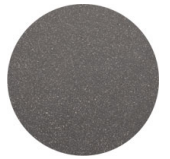
NCS S8005-Y20R Brown
☀



NCS s0502-b VR Traffic white
☀



NCS S4040-R Marsala
☀



VR Pewter
☀



NCS S0500-N VR Pure white
☀



NCS S7502-B VR Anthracite grey
☀

CERTIFICATIONS

- > UNI/EN 16139:2013 - Par.4 Sicurezza. 4.3 Stabilità (18/10/16)
- > UNI/EN 16139:2013 - Par.4.1. Generale. 4.2 Cesoiamento e schiacciamento (18/10/16)
- > UNI/EN 16139:2013 - Par.6. Prova 1. Carico statico sedile e schienale: 2-Uso estremo (18/10/16)
- > UNI/EN 16139:2013 - Par.6. Prova 11. Prova di durabilità dell'appoggiatesta: 2-Uso estremo (11/11/16)
- > UNI/EN 16139:2013 - Par.6. Prova 12. Prova di carico statico delle gambe anteriori: 2-Uso estremo (11/11/16)
- > UNI/EN 16139:2013 - Par.6. Prova 13. Prova di carico statico delle gambe laterali: 2-Uso estremo (11/11/16)
- > UNI/EN 16139:2013 - Par.6. Prova 14. Prova di urto sul sedile: 2-Uso estremo (11/11/16)
- > UNI/EN 16139:2013 - Par.6. Prova 15. Prova di urto sullo schienale: 2-Uso estremo (11/11/16)
- > UNI/EN 16139:2013 - Par.6. Prova 2. Carico statico sul fronte anteriore: 2-Uso estremo (18/10/16)
- > UNI/EN 16139:2013 - Par.6. Prova 3. Carico verticale sullo schienale: 2-Uso estremo (18/10/16)
- > UNI/EN 16139:2013 - Par.6. Prova 4. Carico statico sul poggiatesta/ poggiatesta: 2-Uso estremo (18/10/16)
- > UNI/EN 16139:2013 - Par.6. Prova 8. Prova di fatica sedile e schienale: 2-Uso estremo (31/10/16)
- > UNI/EN 16139:2013 - Par.6. Prova 9. Prova di fatica del bordo anteriore: 2-Uso estremo (04/11/16)

USES

coffee & restaurants, hotels,