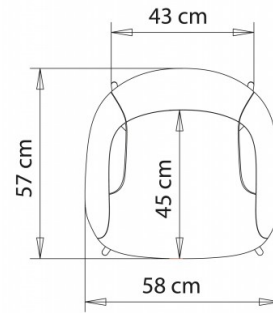
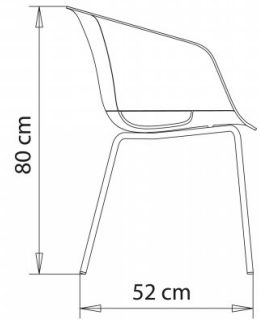
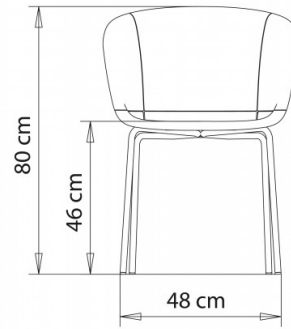


Dunk 1190

DUNK COLLECTION:

Dunk 1191, Dunk 1190, Dunk 1191m, Dunk 1191n, Dunk 1192, Dunk 1192m, Dunk 1192n, Dunk 1193, Dunk 1193m, Dunk 1193n, Dunk 1194, Dunk 1194m, Dunk 1194n, Dunk 1195m, Dunk 1195, Dunk 1195n, Dunk 1196, Dunk 1196m, Dunk 1196n,



Armchair, shell in open version with steel frame, 4 legs.

WEIGHT

5,4 Kg

PACK

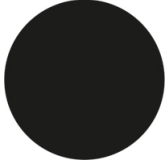
0,40 m³

PIECES PER BOX

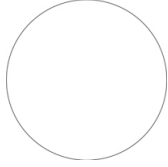
4

FINISHES SEATING

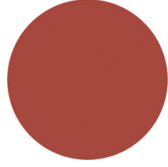
PP POLYPROPYLENE



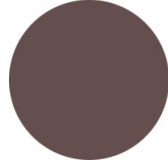
NCS S9000-N
Jet black



NCS S0502-B
Traffic white



NCS S4040-R
Marsala



NCS S6502-R Clay



NCS S7020-G50Y
Olive green



NOTE

Resources

[3ds](#)



[dwg](#)



The marsala-coloured shell, available in open and closed versions, is made of r-PP (recycled PP) polypropylene from sorted packaging and products at the end of their life cycle.

FRAMES

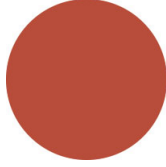
AC STEEL



NCS S4000-N VR White
aluminium
☀



NCS S9000-N VR Jet
black
☀



NCS S3060-Y80R
Coral red
☀



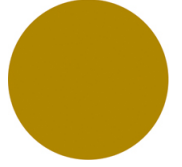
NCS S9000-N VR Matt
Jet Black
☀



VR Rough metallic
bronze
☀



CR Chrome



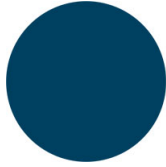
NCS S3060-Y Curry
☀



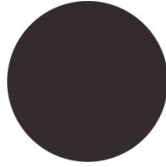
NCS S7020-G50Y
Olive green
☀



NCS S4050-B40G
Water blue
☀



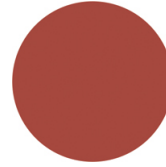
NCS S6030-B
Capri blue
☀



NCS S8005-Y20R
Brown
☀



NCS s0502-b VR
Traffic white
☀



NCS S4040-R
Marsala
☀



VR Pewter
☀



NCS S0500-N VR Pure
white
☀



NCS S7502-B VR
Anthracite grey
☀

USES

coffee & restaurants, hotels, educational, entertainment, travel, office and waiting areas, retail, health care, outdoor,