

Poltrona lounge, poltroncina e sgabello: una collezione di sedute dalla forma morbida e avvolgente pensate per l'ospitalità, ma adatti anche al mercato residenziale. La struttura è in tubo d'acciaio verniciato. Il sedile e lo schienale, in tre pezzi per conferire massima robustezza e comodità, sono imbottiti e rivestiti con tessuti, similpelli e pelli selezionate.

*Lounge armchair, small armchair and stool: a collection of seats characterized by a soft and comfortable shape designed for hospitality, but even suitable for the residential market. The structure is in tubular steel. Seat and back, a three pieces construction for maximum strength and comfort, is padded and upholstered with fabrics, faux leathers and selected genuine leathers*

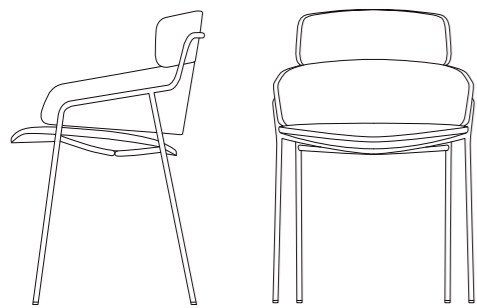
# strike

DESIGN / LucidiPevere





DESIGN / Arrmet lab



Collezione composta da sedia, poltroncina e sgabello con struttura in acciaio cromato o verniciato e scocca imbottita.

Collection composed of chair, armchair and stool with chromed or painted steel frame and upholstered shell.

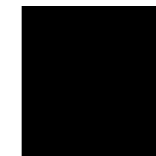
fusto | frame



**CRO**  
CROMATO  
CHROMED



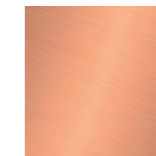
**M6**  
BIANCO  
WHITE



**M7**  
NERO  
BLACK



**M8**  
MARRONE  
GRIGIASTRO  
GREY BROWN



**CU**  
RAME  
RED



**OT**  
OTTONE  
BRASS

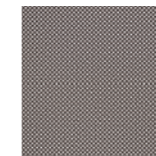
tessuto | fabric\*\*



**KVADRAT**  
DIVINA MD



**FRANCO FABBRI**  
ST. MORRITZ



**GABRIEL**  
GO CHECK



**FIDIVI**  
JET



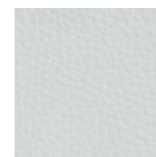
**GABRIEL**  
OBIKA LEATHER



**ABITEX**  
MAGNUM



**KVADRAT**  
STAR 2



**ELMO**  
NORDIC III

strike

strike / LO

strike / ST



sedia a 4 gambe  
four legs chair



sedia lounge a 4 gambe  
four legs lounge chair



sgabello a 4 gambe  
four legs stool

\*\* varianti colori tessuti pag. 170 | fabric colours page 170